

- IMPROVE PRODUCT QUALITY
- MINIMIZE OPERATING COSTS
- OPTIMIZE PRODUCTION OUTPUT
- ENHANCE SAFETY

**SHARING
GLOBAL BEST
PRACTICES**



AIRCRETE PLANT SCAN | AAC EXPERTISE

AIRCRETE PLANT SCAN

BENEFIT FROM GLOBAL BEST PRACTICES

Based on work in **over 100 AAC plants worldwide**, the Aircrete Plant Scan helps you gain valuable insights on your plant's performance & improvement opportunities in the fields of: **Quality, Costs, Output** and **Safety**.

Aircrete Europe is an **AAC technology partner** from the Netherlands, a supplier of the world's leading AAC panel technology and a plant owner. Aircrete has over 40 years of industry experience and has its roots in the DUROX technology.

Beyond delivering turn-key plants, Aircrete services and assists plant operations of key players in the AAC industry.



AIRCRETE AT YOUR SERVICE

Our team of production managers, mechanics, operators, chemists, mechanical & software engineers and business developers is ready to share their in-depth expertise covering the entire AAC value chain. The languages spoken by our staff include English, German, Spanish, Portuguese, Chinese, Russian, Polish.

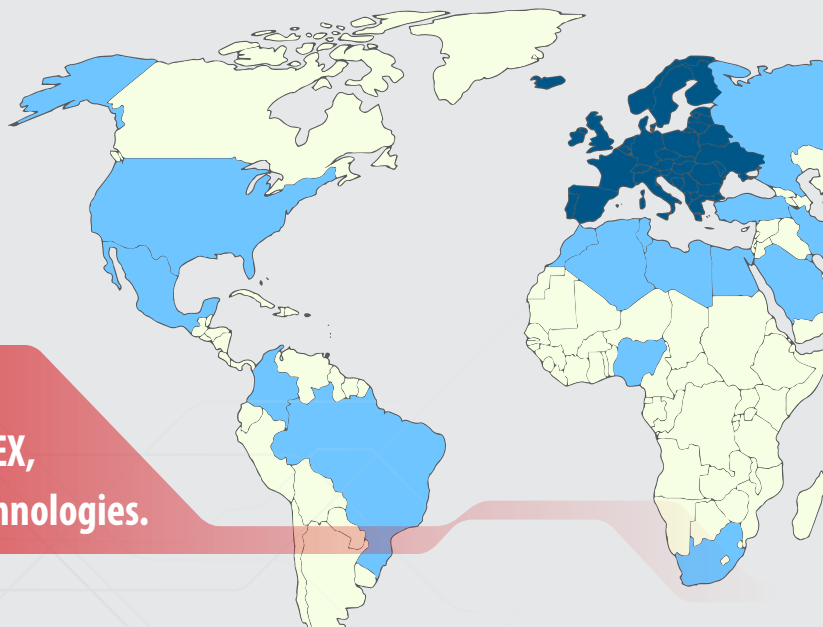
Aircrete Europe has 40 years of experience in servicing and upgrading plants with SIPOREX, HEBEL, STEMA, YTONG and other TILT-CAKE technologies.



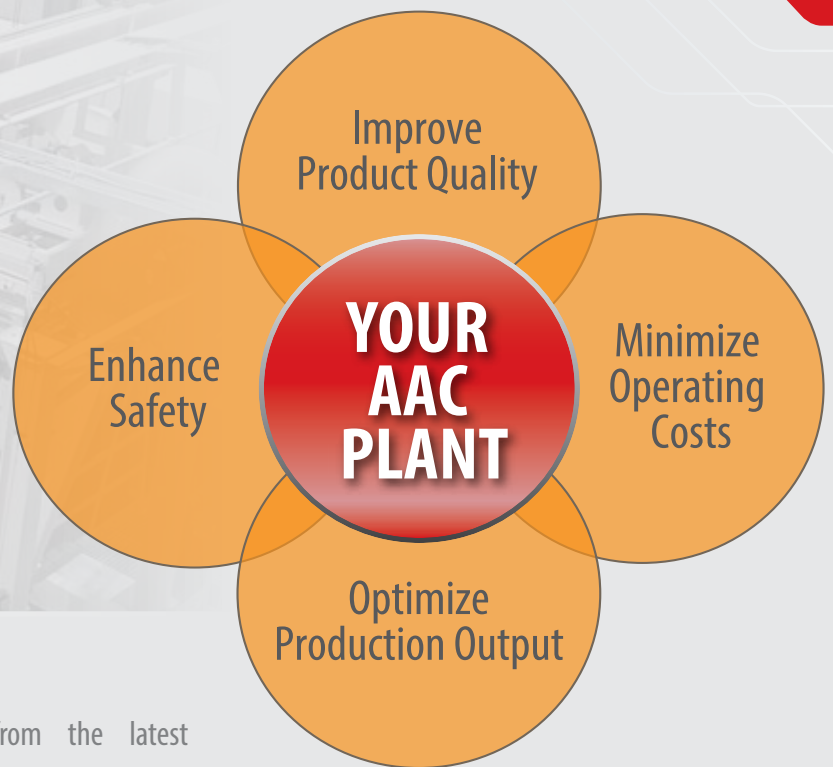
PLANT SCAN PROCESS

The Plant Scan consists of a one-day visit to your plant by two Aircrete specialists and includes interviews with plant management and production staff as well as a plant inspection tour.

- One day scan
- Two Aircrete specialists
- Brief report with key insights
- Submitted within seven days
- Follow-up conference call



Take advantage of our global expertise
on AAC technology and order a scan of your plant.

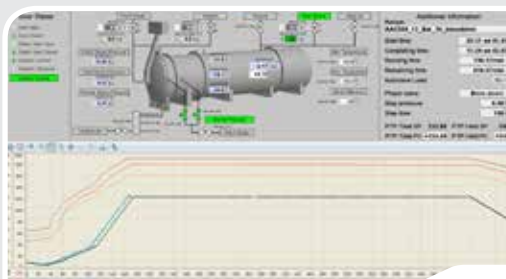


PLANT SCAN INSIGHTS

The Plant Scan allows your plant to benefit from the latest **innovations** and **best practices** observed by Aircrete around the world.

The Plant Scan offers **insights** on the potential **improvements** in:

- Waste reduction
- Maintenance program
- Raw material quality
- Recipe design
- Plant automation
- Energy efficiency
- Process cycle times
- Work shift allocation
- Utilities consumption
- Machine wear & tear
- Consumables & spare part management
- New product applications





AIRCRETE
EUROPE
Autoclaved Aerated Concrete

Stay in touch with Aircrete Europe:



www.aircrete-europe.com



Aircrete Europe
Münsterstraat 10
7575 ED Oldenzaal
The Netherlands

Tel: +31 (0) 541 571020
Email: info@aircrete.nl